

IRIDICA: A single platform solution

Unparalleled coverage
**bacteria
fungi
viruses**

780



bacterial & *Candida* sp.

207



fungal species

131



viral species
13 reporting groups

Identifies



one or more
pathogens in
poly-microbial
infections

Direct sample testing,
culture-independent



Whole blood



Sterile fluids & tissues



BAL, ETA



Plasma



Antimicrobial
resistance
markers



Not affected
by antimicrobial
pretreatment

Definitions BAL **Bronchoalveolar Lavage** ETA **Endotracheal Aspirate**



Please visit <http://iridica.abbott.com> to learn more about IRIDICA or contact your local sales representative.

IRIDICA – the fastest, broad-based CE-marked molecular microbial identification system.



**Fast Results.
Faster Actions.**

Transforming Patient Care with a Breakthrough Solution for Rapid, Broad Microbial Detection and Identification



CHOOSE TRANSFORMATION™



AMD-00002821 - 03/2015

Abbott GmbH & Co. KG
Max-Planck-Ring 2
65205 Wiesbaden, Germany
Tel: (+49) 61 22 58 0
Fax: (+49) 61 22 58 1244



Advancing early optimized antimicrobial therapy for critically ill patients with infections

The Challenge

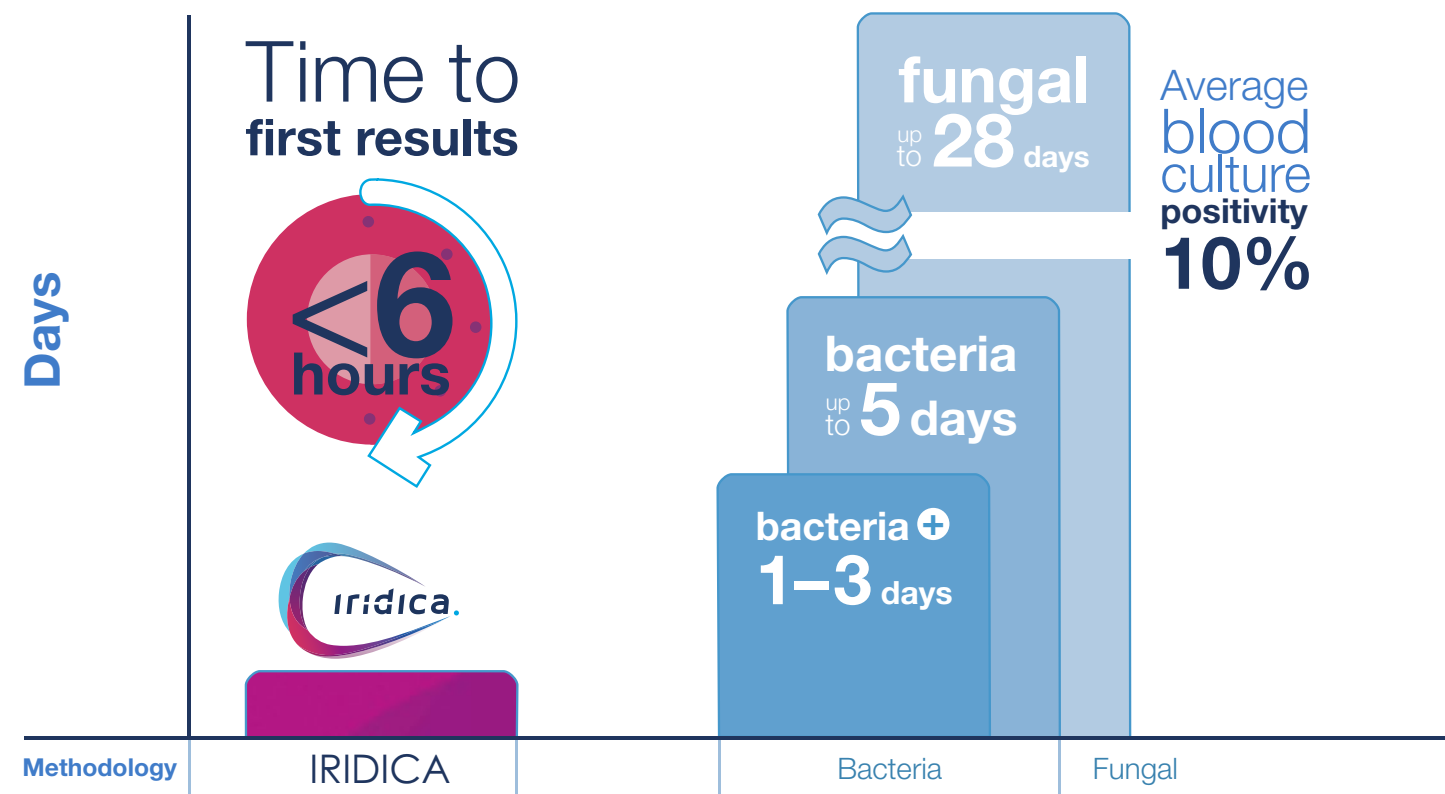
Culture methods are the standard of care and identification of pathogens can take days to weeks. These time frames are inconsistent with the clinical need for rapid pathogen identification allowing you to make the most informed treatment decisions.

Mancini N, Carletti S, Ghidoli N, et al. The Era of Molecular and Other Non-Culture Based Methods in Diagnosis of Sepsis. Clin Microbiol Rev. 2010;23(1):235-51.

A New Era. A New Solution. IRIDICA

Using an innovative new technology combining polymerase chain reaction (PCR) with electrospray ionization mass spectrometry (ESI-MS), IRIDICA provides actionable results that empower you to confidently transition to optimized patient therapy within 6-8 hours.

IRIDICA'S Time To First Results versus Culture



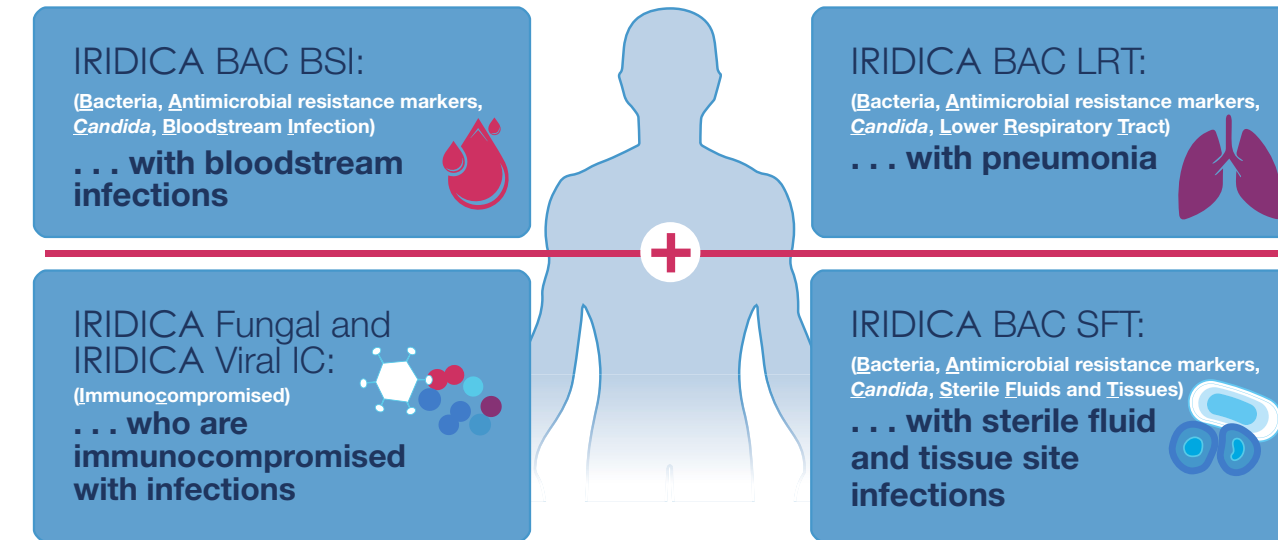
IRIDICA's time to first results is **6 hours**, regardless of pathogen type, whereas results from some **bacterial** and **fungal cultures** can take up to **5** or **28 days**, respectively.

References

- Mancini N, Carletti S, Ghidoli N, et al. The Era of Molecular and Other Non-Culture Based Methods in Diagnosis of Sepsis. Clin Microbiol Rev. 2010;23(1):235-51.
- Amarsy-Guerle R, Mougari F, Jacquier H, et al. High Medical Impact of Implementing the New Polymeric Bead-based BacT/ALERT® FAPlus and FNPlus Blood Culture Bottles in Standard Care. Eur J Clin Microbiol Infect Dis. 2015. doi: 10.1007/s10096-015-2319-8.

Bringing more certainty to critical care

IRIDICA assays are specifically designed to help you in the care and management of critically ill patients . . .



IRIDICA provides the most comprehensive array of microbial testing directly from clinical samples, including whole blood, as compared to other current diagnostic techniques.

Assay Menu

Assay	Coverage	Sample Type
1 IRIDICA BAC BSI	780 Bacteria, Candida and 4 antibiotic resistance markers: <i>mecA</i> <i>vanA</i> <i>vanB</i> and KPC	5 mL EDTA whole blood
2 IRIDICA BAC SFT		0.5 mL sterile fluid 35 mg sterile tissue
3 IRIDICA BAC LRT	Identical coverage with semi-quantitative threshold	0.1 mL BAL or ETA
4 IRIDICA Fungal	207 fungal species	5 mL BAL or isolate
5 IRIDICA Viral IC	131 viral species in 13 reporting groups	0.5 mL plasma

IRIDICA Assay Clinical Performance versus Culture*

Assay	PPA	NPA
1 IRIDICA BAC BSI	80%	99.97%
2 IRIDICA BAC LRT	100%	97.86%
3 IRIDICA BAC SFT	90.38%	99.95%
4 IRIDICA Fungal	92.1%	99.0%

*Data from IRIDICA Assay package inserts

IRIDICA Assay Clinical Performance versus PCR*

Assay	PPA	NPA
5 IRIDICA Viral IC	94%	99.6%

*Data from IRIDICA Assay package insert

Definitions PPA Positive percent agreement NPA Negative percent agreement

Comprehensive

Unparalleled coverage of pathogens directly from sample without the need for culture

Actionable

Supports patient management
Reduction of broad spectrum antibiotics, switch to early optimized antimicrobial therapy